



Bahria University

Lets Change The World

Lahore Campus



RECTOR'S HONOR LIST
Fall Semester 2024

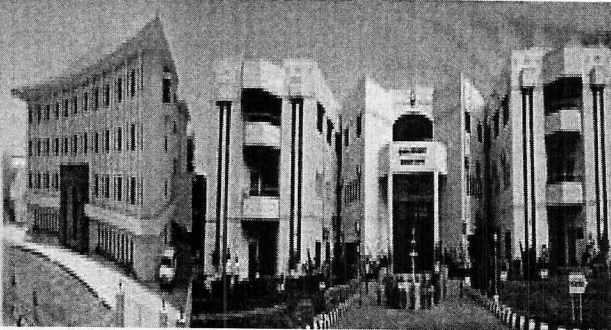
S.No	Reg. No.	Enroll No	Program	Name	CGPA
1	73414	03-111211-012	BBA	NAFEES UL HUSSAIN	3.90
2	83570	03-135231-032	BS (IT)	NABIHA	4.00
3	83588	03-135231-051	BS (IT)	SAHIL IJAZ	4.00
4	78805	03-135221-033	BS (IT)	MUHAMMAD FAIZAN TAHIR	3.97
5	78614	03-135222-049	BS (IT)	SYED MUHAMMAD MEHDI RAZA	3.97
6	78804	03-135221-032	BS (IT)	ZARA ASIF	3.94
7	78608	03-135222-042	BS (IT)	SAFA NAVEED	3.94
8	94234	03-135242-019	BS (IT)	HAIQA AMIR	3.94
9	73524	03-135211-014	BS (IT)	MUHAMMAD NASR	3.92
10	78549	03-135231-035	BS (IT)	RAMEEN JAVED	3.92
11	87476	03-135232-042	BS (IT)	MUHAMMAD AHMAD FAZAL	3.92
12	87473	03-135232-039	BS (IT)	MUHAMMAD ABUBAKAR FAROOQ	3.90
13	78822	03-171221-009	BS Psychology	YUMNA SHAHZAD	4.00
14	98022	03-171242-005	BS Psychology	ASFA ZAINAB	4.00
15	98023	03-171242-006	BS Psychology	ASMA SAEED	4.00
16	55780	03-171212-007	BS Psychology	IQRA ZUBAIR	3.97
17	87434	03-171232-013	BS Psychology	ZAINAB MEHMOOD	3.96
18	98021	03-171242-004	BS Psychology	ARFA IQBAL	3.94
19	73394	03-171211-008	BS Psychology	HIRA ASHIQ	3.92
20	77765	03-171221-012	BS Psychology	SAHAB KAZMI	3.92
21	83483	03-134231-003	BS(CS)	ABDUL REHMAN AWAN	3.98
22	94142	03-134242-036	BS(CS)	MARIUM JAVED	3.96
23	94197	03-134242-095	BS(CS)	ZAINAB FATIMA	3.94
24	94195	03-134242-092	BS(CS)	TAYYAB MEHMOOD	3.92
25	73464	03-134211-008	BS(CS)	BURHAN HADI BUTT	3.91
26	91554	03-134241-056	BS(CS)	TAIBA ABID	3.90
27	87538	03-321232-002	MBA	HAFIZ MUHAMMAD ABU BAKR	3.96
28	87583	03-275232-032	MS (CP)	MUHAMMAD ZEESHAN	4.00
29	65508	03-275232-038	MS (CP)	RABBIA IFTIKHAR	4.00
30	94370	03-275242-008	MS (CP)	HASEEB AHMAD SAGHEER	4.00
31	87570	03-275232-019	MS (CP)	HAMIDAH	3.97
32	91627	03-275241-006	MS (CP)	AYESHA SAFDAR	3.97
33	87556	03-275232-005	MS (CP)	AQSA TANVEER	3.95
34	94365	03-275242-003	MS (CP)	AREEBA KHALID	3.95



Bahria University

Lets Change The World

Lahore Campus



RECTOR'S HONOR LIST
Fall Semester 2024

S.No	Reg. No.	Enroll No	Program	Name	CGPA
35	94398	03-275242-038	MS (CP)	ULAIBA WAHEED	3.95
36	94399	03-275242-039	MS (CP)	UZMA	3.95
37	91655	03-275241-037	MS (CP)	NOOR FATIMA	3.93
38	87580	03-275232-029	MS (CP)	MINAHIL IJAZ	3.91
39	91656	03-275241-038	MS (CP)	NOOR UL AIN ZAFAR	3.91
40	78674	03-243222-015	MS (CS)	SANA ZUBAIR	3.91
41	91620	03-398241-007	MS (PM)	MUHAMMAD ZAURAIZ HAIDER NAQVI	4.00
42	69525	03-284242-001	Ph D (CS)	ZOOBIA FATIMA	4.00